

**WHANGAREI**  
**Physiotherapy Services**

445 Kamo Road, Kamo, Whangarei  
Telephone 09 435 2299  
Facsimile 09 435 2222  
Kensington Gym Clinic  
Telephone 09 459 5000

**Matarau Electrical  
Services**

RD1, Kamo, Whangarei

Phone 09 433 5533

Andrew Coop

Registered Electrician

021 733 883 All Domestic, farm &  
commercial maintenance

**New** house wiring . Light industrial .  
alterations

**Top service anywhere in town**



**YOUR MEAT SPECIALIST**

29 Kamo Road, Kamo

A/h 435 3002

Phone 09 4351403

A/h fax 4353012

Fax 09 4351780

Mobile 027 5435140

**ALASTAIR RICKEY DECORATING LTD**

**Bring your home to life...**

450 Matarau Road  
R.D.1 Kamo 0121  
Whangarei

Ph/Fax: 09 435 5509  
Cell: 021 766 439  
email: rickey9@xtra.co.nz

**Interior &  
Exterior  
Painting &  
Decorating**



**Independent - Trade Qualified**

**Trent Sissons**

**P 433 5156 M 021 743 163**

**www.heatpumppro.co.nz**

# Newsletter

**Number 11**

**11 May 2012**



**Website** [www.matarau.school.nz](http://www.matarau.school.nz)

**Phone / Fax** (09) 433 5823 **Email** – [admin@matarau.school.nz](mailto:admin@matarau.school.nz)

## Thanks

.. The parents who helped with today's headlice inspection. Many hands made light work. We really appreciate you giving up your time.  
.. Staff and parents who supported this week's senior disco.

## People of the week

.. Emma who received "Player of the Day" for Matarau Monkeys' Netball (Yr 4-6).  
.. Brad, Laura and Hazel placed 4<sup>th</sup> in the Agri Kids Competition.  
.. The Garden Club children who continued working diligently while Mrs McKegg dealt with an emergency.  
.. Those senior children who have opted in to this years 20 Hour Famine.  
.. Former students Andrew and Liam placed 3<sup>rd</sup> equal in the new TeenAg competition and Andrew who was appointed a Junior Ambassador for Kamo High.

## Current Virtue . . **COMMITMENT**

Please continue your work at home on the commitment virtue .. this virtue will run for the next couple of weeks.

Please let us know of any successes so that we can celebrate these through the school newsletter.

## Coming up this term

22 May	Year 7 and 8 Winter Sports Tournament
25-27 May	20 Hour Famine
29 May	Year 4-6 Winter Sports Tournament
30 May	HPV vaccination dose 2 (Year 8 girls)
30 May	Mobile Ear Clinic outside Bush Rd Medical Centre
31 May	Year 7 and 8's Rock Wall Climbing at Taurikura
5 June	Board of Trustees meeting (6:00 PM)
11 June	Visit by team from Education Review Office
15 June	Portfolios issued to parents
20 June	Visit by reps of Whangarei Girls High (year 8 girls)
25/26 June	Parent / Teacher Interviews
26 June	Matarau School Science Fair Prize Giving
27 June	Mobile ear Clinic outside Bush Rd Medical Centre
29 June	Final day of term 2

## Famine (25-27 May)

If your child is involved in this year's famine please encourage them to get as many sponsors as possible.

## **Matarau Hockey - Sponsored by McQuinn Ground Spread**

Players of the Day Saturday 5 May :



C Grade - Tylar



D Grade - Amy

### **Term Headlice Inspection**

Recent checks indicated moderate levels of infestation. If you received advice of infestation (or suspected infestation) please take action before your child returns to school on Monday. Children will be re-checked next week. From this point forward parents are asked to check their children's hair weekly please.

### **After School Reading Labs**

These labs focus principally on close comprehension, location of information in text, inference and word meaning. We don't really get too many opportunities to ask children for the impressions of the broader text. It would be helpful if parents (perhaps in the car on the way home) could ask their children to tell them about what they read that day, what they learnt from this etc. The material covered in these labs is very broad and excellent for expanding general knowledge. This week a child read about Ann Frank and so we asked her to tell her parents about Ann's life and the difficulties she faced.

Additionally, we ask children to take home at least one new word per session to share at home. Ask them for this word (ask them to put it in a sentence) .. and then ask them the next day, and then a week later to drive it into their longer term memory. Thanks for your help.

### **Kapa Haka**

If you are keen for your child to be involved in after school Kapa Haka classes (3:00 to 4:00 PM on a Tuesday - parent pick up at 4:00 PM), and you have not received a consent, please contact Mrs Abbott next week. Mrs Abbott is still keen to hear from parents able to help with this programme - especially if able to play the guitar.

### **Maori Liaison Person**

We are pleased to advise that Toni Pivac has been appointed to the role of Maori Liaison Person. The Maori Liaison Person provides an alternative avenue of communication between Maori families and the Board/School and advise the Board/School on cultural issues. Toni can be contacted on 4351041 or 0211737221. A special thanks to Toni for taking on this role.

### **Year 7 and 8 - Science Fair / Action research**

Any questions about topics / experiments to Mrs Donaldson or Mr D please on [scottydelemare@gmail.com](mailto:scottydelemare@gmail.com). Please make contact early if you sense your child is encountering difficulty or is falling behind.

### **Request from the Library**

During the coming months there will be lunchtime activities held in the library. For this we require various sized needles, wool, games and puzzles. If you can be of assistance please contact the office. Thank you very much.

### **Scholastic Book Club**

Issue #3 sent home this week. All orders and payments to the office by Friday 18<sup>th</sup> May please.

### **School Contribution / Activity Fee**

Payment requests were issued recently to those families who have opted for term or deferred payment. The School Contribution is optional (but appreciated) but the activity fee is compulsory please. The activity fee pays for the "add ons" like bus trips to events, visiting drama groups and so on and saves us having to ask for \$5 here and \$6 there. If you would like to discuss alternative payment arrangements please contact Kevin.

### **Netball Fees**

A reminder that fees for netball are required to be paid asap. \$40 for the Year 5-6 team and \$50 for Intermediate team. Thank you to those who have paid promptly.

### **Beautifying the School**

We are currently beautifying and replanting the gardens by the office and in front of Room 11. If you are able to donate any of the following plants they would be gratefully received.

Clivia (any colour/variety)

Ajuga

Hellebores ( Greens, Purples)

Liriope Muscari (Purple/blue)



Please bring to school in a plastic bag and bring to Room 3 or the office before or by next Friday 11 May.

### **Finally**

Last week we promised you some early impressions from our "Learning Styles Survey". So we will trickle these out to you.

.. When responding to the statement 'I know there are things I am good at' 94% of students agreed or strongly agreed, 6 % were not sure and no students disagreed or strongly disagreed.

.. When responding to the statement "I have strengths I can share with others" 77% agreed or strongly agreed, 19% were not sure and 2% disagreed.

More to follow next week. Have a great weekend.

Regards

Kevin Trehwella  
PRINCIPAL

Our Sponsors support your  
children, please support

**WHANGAREI**  
**Physiotherapy Services**

445 Kamo Road, Kamo,  
Whangarei  
Telephone 09 435 2299  
Facsimile 09 435 2222  
Kensington Gym Clinic  
Telephone 09 459 5000

### **Community Notices**

For Rent – 3 bedroom house, no garage, fenced, HRV system, open fireplace. Along school bus route. 10 mins to Kamo. \$290 per week incl water. Ph 4335814.

Pop Up Books – Display of 'paper engineered' books collected over 30 years. Old Library Art Centre, Rust Ave, 16<sup>th</sup> May-9<sup>th</sup> June.

Carters Paihia Run/Walk - Sunday 27<sup>th</sup> May 2012. To register go to ASB Northland Sports House, Western Hills Drive, Kensington or <http://www.runwalkseries.co.nz/default.asp?PageID=4043>

"KidzCamp" - July School Holidays 2012 Registrations are now open. Visit [www.marsdenbay.com](http://www.marsdenbay.com) for more details or contact Helena Lamason via email: [info@marsdenbay.com](mailto:info@marsdenbay.com).

New!!! 'The Creative Cafe' - \* paint your own ceramics! \* beads and jewellery design! Tuesday - Sunday from 10am at 85 Cameron St, WHANGAREI, [www.thecreativecafe.co.nz](http://www.thecreativecafe.co.nz)

Dance Inc Northland is offering limited places in Ballet, Jazz, Contemporary & Musical Theatre dance classes. All ages catered from 2 1/2 years and over. Please phone 4308806, visit [www.danceincnorthland.co.nz](http://www.danceincnorthland.co.nz) or e-mail [danceincnorthland@gmail.com](mailto:danceincnorthland@gmail.com)

Interested in drama? Rising Starz Performing Arts Trust runs Drama Club for primary school aged children on Sundays from 12pm to 1:30pm. Term 2 begins Sunday 29<sup>th</sup> April. Production at Captaine Bougainville in November. \$50 per term. For more information contact Kerry on 021 269 2311 or Wendy 432 9218.

Whangarei Choral Society & BOI Singers performance – 2.30pm Saturday 12<sup>th</sup> May, at Christchurch, Kamo Road; see Gail Wynyard for more info.

For Sale - Free Range Eggs, \$5 per dozen, Will deliver to school. Phone Carol Welsh 433 5035.



## School Lunches

**Mondays** - \$3.00 : Baked Beans or Spaghetti served with toast & a juice, or Chicken or Beef Cup of Noodles & a juice. Order at the office by morning tea on Monday.

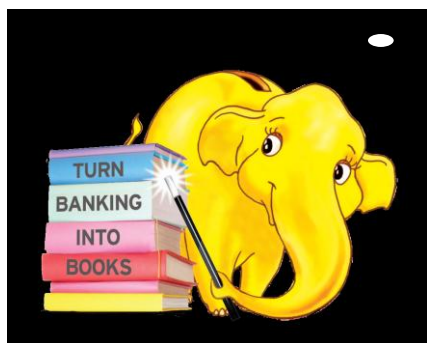
**Wednesdays** - \$1.50 : for Sausage in a bread with sauce. Order on Wednesday mornings through the class teacher.

**Fridays** - \$4.00 : Hot Mince or Mince 'n' Cheese Pie, Jumbo Sausage Roll or Sausage Roll (with Museli Bar), Wraps and a Fruit Drink. You can swap the Fruit drink for a Flavoured Milk for \$4.50. Order by Wednesday at the office, to receive Friday.



## *ASB School Banking*

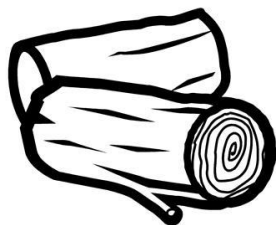
Don't forget to bank your spare coins and SAVE for something big!



### TURN BANKING INTO BOOKS

*Do you want to win books for your school?*

*For every ASB school banking deposit made gives you an entry into the prize draw to win \$500.00 library book voucher plus a St John Emergency Grab Kit.*



## School Fundraising

# FIREWOOD

# WANTED!!!!

*As part of our fundraising this year, we would like to sell firewood. So we are currently looking for donations of trees/wood we can cut up. If you have any available please*

*phone Sharon Smith on 4338371 or 027 631 9361 as soon as possible. Many Thanks.*